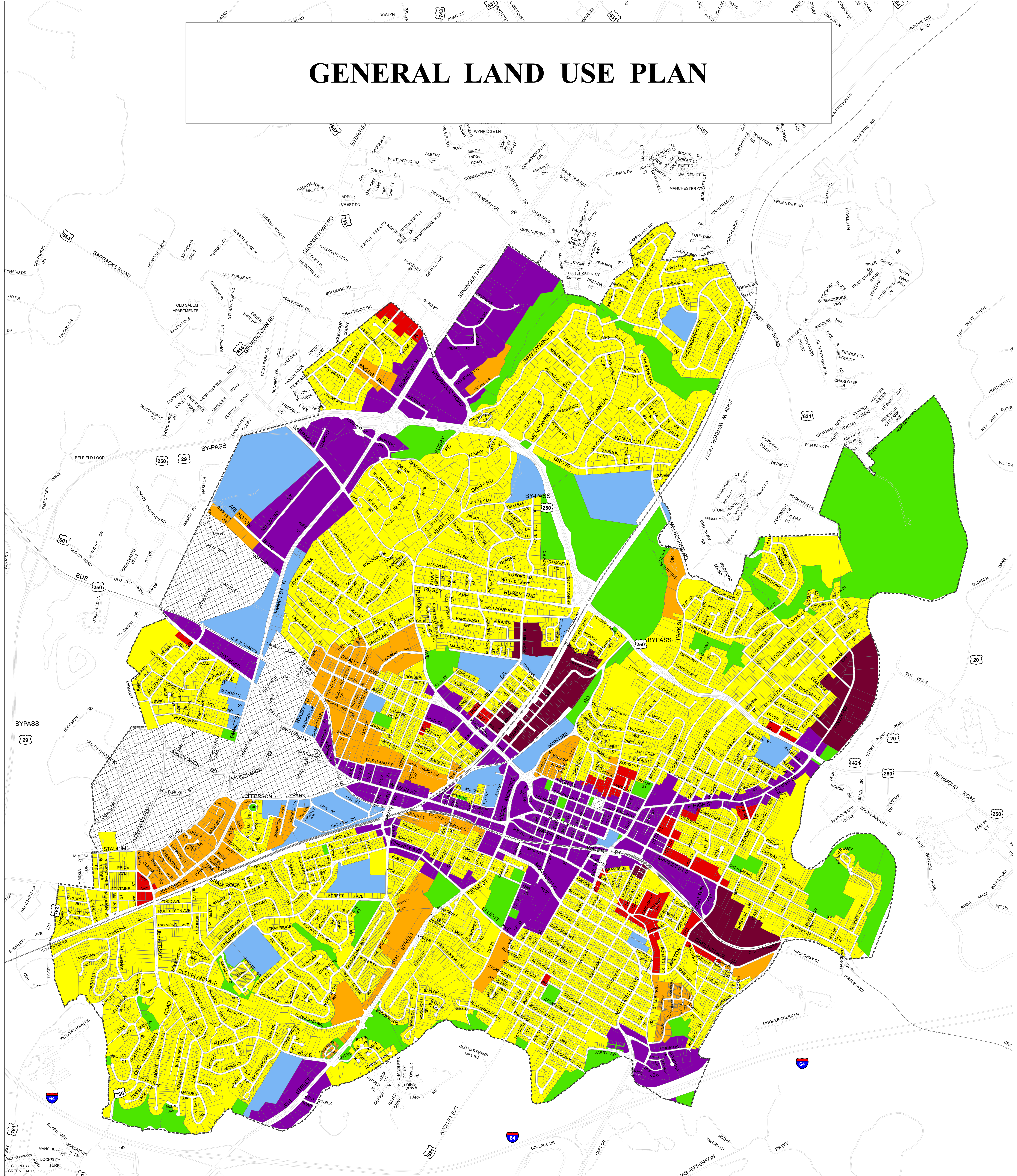


# GENERAL LAND USE PLAN







**Land Use**

Low Density Residential	Park or Preserved Open Space
High Density Residential	Public or Semi-Public
Neighborhood Commercial	** Denotes property not subject to the City of Charlottesville's municipal authority
Mixed Use	
Business and Technology	

0 0.25 0.5 1 1.5 Miles

Map adopted as part of the 2013 Comprehensive Plan by Charlottesville City Council on August 19, 2013.

# Land Use Map Amendment 1

-  Low Density Residential
-  High Density Residential
-  Not subject to Charlottesville's municipal authority
-  Road Centerlines

**Land Use Map changed as a result of a City Council resolution approved 11/18/2019.**

**All other areas are subject to General Land Use Map adopted 8/19/13.**



Map Created 12/19/2019

The geographic data layers produced by the City of Charlottesville are provided as a public resource. The City makes no warranties, expressed or implied, concerning the accuracy, completeness or suitability of this data, and it should not be construed or used as a legal description. The information displayed is a compilation of records, information, and data obtained from various sources, and the City is not responsible for its accuracy or how current it may be. Every reasonable effort is made to ensure the accuracy and completeness of the data. Pursuant to Section 54.1-402 of the Code of Virginia, any determination of topography or contours, or any depiction of physical improvements, property lines or boundaries is for general information only and shall not be used for the design, modification or construction of improvements to real property or for flood plain determination.

